



**REGIONAL SPECIALISED METEOROLOGICAL CENTRE-TROPICAL CYCLONES, NEW DELHI
TROPICAL WEATHER OUTLOOK**

DEMS-RSMC TROPICAL CYCLONES NEW DELHI DATED 20.08.2024

TROPICAL WEATHER OUTLOOK FOR NORTH INDIAN OCEAN (THE BAY OF BENGAL AND THE ARABIAN SEA) VALID FOR NEXT 168 HOURS ISSUED AT 0600 UTC OF 20.08.2024 BASED ON 0300 UTC OF 20.08.2024.

BAY OF BENGAL:

YESTERDAY'S LOW PRESSURE AREA OVER SOUTH BANGLADESH & NEIGHBOURHOOD LAY OVER CENTRAL PARTS OF BANGLADESH & NEIGHBOURHOOD AT 0300 UTC OF TODAY, THE 20TH AUGUST 2024. THE ASSOCIATED CYCLONIC CIRCULATION EXTENDS UPTO 7.6 KM ABOVE MEAN SEA LEVEL. IT IS LIKELY TO MOVE NORTH-NORTHWESTWARDS ACROSS WEST BENGAL DURING NEXT 48-HOURS.

SCATTERED LOW AND MEDIUM CLOUDS WITH EMBEDDED INTENSE TO VERY INTENSE CONVECTION LAY OVER NORTH BAY OF BENGAL ADJOINING COASTAL GANGETIC WEST BENGAL, COASTAL BANGLADESH, WESTCENTRAL BAY OF BENGAL AND ANDAMAN SEA. SCATTERED LOW AND MEDIUM CLOUDS WITH EMBEDDED MODERATE TO INTENSE CONVECTION LAY OVER REST OF BAY OF BENGAL, ARAKAN COAST, GULF OF MARTABAN AND TENASSERIM COAST.

***PROBABILITY OF CYCLOGENESIS (FORMATION OF DEPRESSION) DURING NEXT 168 HRS:**

24 HOURS	24-48 HOURS	48-72 HOURS	72-96 HOURS	96-120 HOURS	120-144 HOURS	144-168 HOURS
NIL	NIL	NIL	NIL	NIL	NIL	NIL

***NOTE: EVERY 24HR FORECAST IS VALID UPTO 0300 UTC (0830 IST) OF NEXT DAY**

ARABIAN SEA:

A FRESH CYCLONIC CIRCULATION LAY OVER SOUTHEAST ARABIAN SEA ADJOINING LAKSHADWEEP AREA EXTENDING BETWEEN 3.1 AND 5.8 KM ABOVE MEAN SEA LEVEL AT 0300 UTC OF TODAY, THE 20TH AUGUST 2024.

SCATTERED LOW AND MEDIUM CLOUDS WITH EMBEDDED INTENSE TO VERY INTENSE CONVECTION LAY OVER EASTCENTRAL & SOUTHEAST ARABIAN SEA, MALDIVES AND COMORIN AREA. SCATTERED LOW AND MEDIUM CLOUDS WITH EMBEDDED MODERATE TO INTENSE CONVECTION LAY OVER WESTCENTRAL & SOUTHWEST ARABIAN SEA, LAKSHADWEEP ISLANDS AREA AND ISOLATED WEAK TO MODERATE CONVECTION LAY OVER NORTH ARABIAN SEA AND GULF OF CAMBAY.

***PROBABILITY OF CYCLOGENESIS (FORMATION OF DEPRESSION) DURING NEXT 168 HRS:**

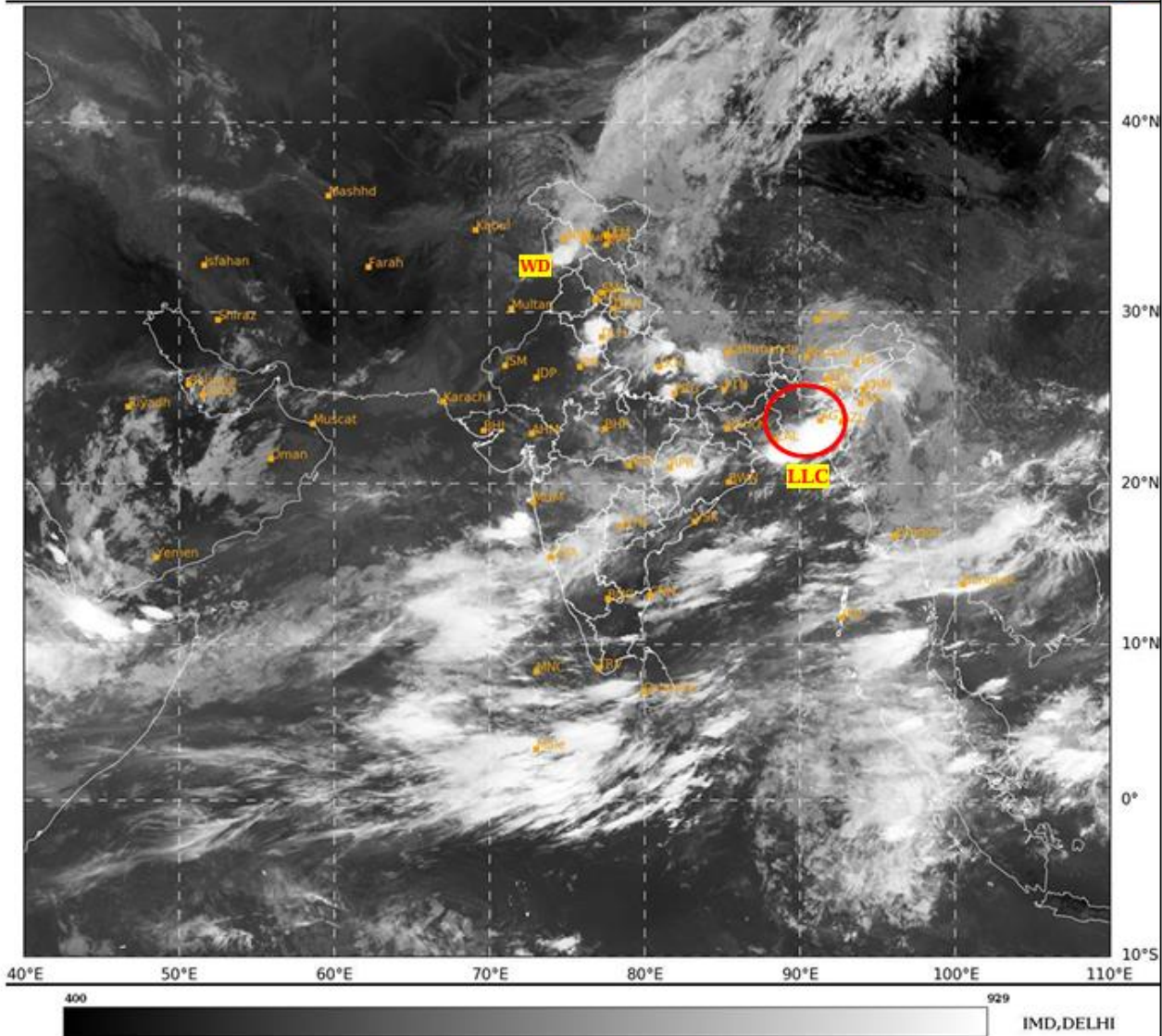
24 HOURS	24-48 HOURS	48-72 HOURS	72-96 HOURS	96-120 HOURS	120-144 HOURS	144-168 HOURS
NIL	NIL	NIL	NIL	NIL	NIL	NIL

***NOTE: EVERY 24HR FORECAST IS VALID UPTO 0300 UTC (0830 IST) OF NEXT DAY**

REMARKS: NIL

SAT : INSAT-3DR IMG
IMG_TIR1 10.8 um
LIC Mercator

20-08-2024/(0315 to 0342) GMT
20-08-2024/(0845 to 0912) IST



Cloud distribution: (a) Isolated: <25%, Scattered:25-50%, Broken: 51-75%, Solid:>75%, Convection Intensity: (a) Weak: Cloud Top Temperature (CTT) >-25°C, (b) Moderate: CTT: - 25°C to -40°C, (c) Intense: CTT: - 41°C to -70°C and (d) Very Intense: : Less than -70°C
PROBABILITY OF CYCLOGENESIS (FORMATION OF DEPRESSION):NIL: 0%, LOW: 1-33%, , MODERATE: 34-66% AND HIGH: 67-100%
This is a guidance Bulletin for WMO/ESCAP Panel Member countries. Visit respective National websites for Country specific Bulletins